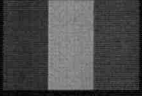


GUIF

GUINEA
INVESTMENT
FORUM

24/26 FEB 2021

CONAKRY, GUINEA



*Guinea is moving forward
Be part of the success story
Come and invest*



Evrakın elektronik imzalı suretine <https://www.turkiye.gov.tr/ticaret-bakanligi-ebys> adresinden 850e2a36-9e93-456a-8b08-9dcc8b37553
BELGENİN ASLİ ELEKTRONİK İMZALIDIR



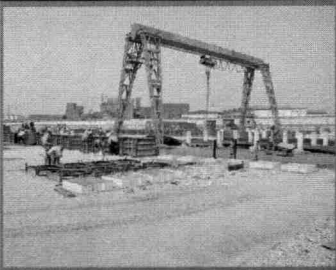
AFRICAN DEVELOPMENT BANK GROUP
AFRICAN DEVELOPMENT BANK GROUP
GROUPE DE LA BANQUE AFRICAINE
DE DEVELOPPEMENT



IFC

International
Finance Corporation
WORLD BANK GROUP

WHY INVEST IN GUINEA



\$10 billion

invested in mining projects since 2011

213,835 tonnes

of fertiliser subsidised since 2010

2nd

largest bauxite exporter in the world

\$2.1 billion

invested in the construction of hydroelectric dams (Kaleta and Souapiti)

\$2.2 billion

invested in the development of road infrastructure since 2011

13 million

hectares of arable land

4,000 km

of submarine cable (ACE) deployed

51,796

Companies created since 2015

3 DAYS WITH THE KEY PLAYERS OF INVESTMENT

FINANCING OPPORTUNITIES

Access a list of "creditworthy" public and private projects that should lead to operational transactions.

BUSINESS MEETINGS

Initiate and concretise projects through BtoB and BtoG meetings planned via the Deal Rooms or informal discussions in adapted spaces, both face-to-face and virtual.

ONE DAY OF SITE VISIT

Discover the sites that Guinea has to offer according to your area of interest.

HIGH-LEVEL CONFERENCES AND DIALOGUES

Access government strategy and discover the main trends in the Guinean economy with a focus on the framework and structural reforms to improve the business environment.

EXHIBITION AREAS

Get in direct contact with your future partners: Guinean and international economic players, service providers, Guinean and international investors.

#GUIF2021

PRIORITY INVESTMENT SECTORS

1

AGRICULTURE

Guinea has a huge agricultural potential with 13 million hectares of arable land, 364,000 hectares of irrigated land, 70,000 km² of pasture (27% of the total land). 75% of the cultivable area remains to be developed.

2

ENERGY

Recognized as "The Water Castle Of West Africa", Guinea has a dense river network of 6,250 km divided into 1,165 rivers. Its hydroelectric production potential of 6,100 MW makes Guinea the future regional energy hub.

3

INFRASTRUCTURE

Since 2010, Guinea has embarked on vast infrastructure construction and renovation projects: housing construction, transformation of the road network, development of port and railway infrastructures, improvement of telecommunications infrastructures, etc.

4

MINES

A veritable geological scandal, Guinea has two thirds of the world's bauxite reserves (the largest and highest-grade deposits in the world), in addition to significant reserves of gold, diamonds, iron, oil, etc.

5

ICT

As part of modernisation reforms, the Guinean government wants to implement projects to digitise administrative services, improve connectivity through fibre optics, set up a national data centre and develop the digital economy.





GUINEA IDENTITY CARD

Guinea occupies a strategic geographical position, sharing 3,400 km of borders with 6 countries: Côte d'Ivoire, Guinea-Bissau, Liberia, Mali, Senegal and Sierra Leone (64 million inhabitants). The country benefits from maritime access via a 300 km coastline on the Atlantic Ocean.

Capital: Conakry

Surface area: 245,857 km².

Total population: 12.7 million

4 natural regions:

Maritime Guinea: coastal zone,

Middle Guinea: mountainous region with the Fouta Djallon massif,

Upper Guinea: savannah region with the Upper Niger National Park
(recognised by UNESCO)

Guinea Forestière: mountainous region with Mount Nimba (largest mountain in
West Africa, recognised by UNESCO).

Growth rate: 6%.

ECOWAS and Mano River Union member country

Currency: Guinean franc

*Guinea is moving forward,
Be part of the success story,
Come and invest*



GUIF

GUINEA
INVESTMENT
FORUM

24/26 FEB 2021
CONAKRY, GUINEA

Contact:

guif@apip.gov.gn

(+ 224) 620 47 61 02

(+ 224) 660 02 01 01

(+ 224) 628 61 63 22

www.guineainvestmentforum.com



Facebook: @APIPGN

Twitter: APIP_Guinee

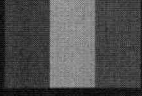
LinkedIn: @Agence de Promotion des Investissements Privés

#GUIF2021

GUIF

GUINEA
INVESTMENT
FORUM

24/26 FEB 2021
CONAKRY, GUINEA



SPONSORSHIP OPPORTUNITIES

By becoming a sponsor of the inaugural Guinea Investment Forum (GUIF) you will benefit from:

- Expanding your portfolio through prestigious clients: domestic and foreign investors
- Being a key player in investment in the Republic of Guinea
- Enjoy international visibility
- Promote your products and services at a high-end event
- Contribute to Guinea's socio-economic development through a privileged partnership with the Private Investment Promotion Agency

We have developed packages that offer many benefits which you can select based on your budget



Evrakın elektronik imzalı suretine <https://www.turkiye.gov.tr/ticaret-bakanligi-ebys> adresinden 850e2a36-9e93-456a-8b08-9dcc8b37553 BELGENİN ASLİ ELEKTRONİK İMZALIDIR.



AFRICAN DEVELOPMENT BANK GROUP
GROUPE DE LA BANQUE AFRICAINE
DE DEVELOPPEMENT



International
Finance Corporation
WORLD BANK GROUP

GUIF

GUINEA INVESTMENT FORUM

24/26 FEB 2021

A HYBRID EVENT



| VISIBILITY | SPONSOR ELITE | SPONSOR PLATINUM | SPONSOR GOLD |
|--|-------------------------------|-------------------------------|-------------------------------|
| Advert page in the GUIF brochure (printed and digital) | Double page | Single page | Half page |
| Logo on the official event brochure | ✓ | ✓ | ✓ |
| Logo on videos | ✓ | ✓ | ✓ |
| Logo in the GUIF registration area | ✓ | ✓ | |
| Logo on communication media (cord badge, diary, etc.) | ✓ | | |
| Logo on the videos of the show "GUIF Link Investors" | ✓ | ✓ | |
| Logo on the website | ✓ | ✓ | ✓ |
| Logo on social media posts | ✓ | ✓ | ✓ |
| Logo in Newsletters | ✓ | ✓ | ✓ |
| Logo in video spots | ✓ | | |
| Quote in National and International Press Interventions | ✓ | | |
| EXHIBITION | | | |
| Stand space in exhibition area | 18m2 | 12m2 | 9m2 |
| Insert in the delegate bag | ✓ | ✓ | ✓ |
| VIP SPACE | | | |
| Passes with VIP access | 4 | 2 | 1 |
| Access to public and private projects | ✓ | ✓ | |
| Access to the list of forum registrants | ✓ | | |
| INTERVENTION | | | |
| Participation in one of the panels (to be of a senior level) | ✓ | ✓ | |
| Product presentation at the gala dinner | ✓ | | |
| Participation in B2B and B2G activities | ✓ | | |
| | 500 000 000 GNF / \$50,000 | 200 000 000 GNF / \$20,000 | 100 000 000 GNF / \$10,000 |

PARTNERS: CONSULTING AND AUDITING FIRMS, HOTEL AND RESTAURANTS EVENT AND TOURISM AGENCY, TRANSPORT, MEDIA, STYLISTS

- Badges of access to the Forum
- Logo on all promotional material of the event
- Logo dans les newsletters
- Access to the database of project owners

Contact: guif@apip.gov.gn

Evrakın elektronik imzalı suretine <https://www.turkiye.gov.tr/ticaret-bakanligi-ebys> adresinden 850e2a36-9193-4561-8b08-91c98b27553 BELGENİN ASLI ELEKTRONİK İMZALIDIR.

#GUIF2021